



Home Pillow Cover

crochet pattern

The pattern and all images associated with this pattern cannot be copied, shared, altered or sold as your own. You are welcome to sell the finished product but please include a link (if online) and reference jototheworld.com and tag @jototheworldcreations in your posts.



Skill Level

Intermediate to Advanced (as it can be difficult to see the stitches)

Size

The pattern creates a pillow/cushion/throw cover that fits over a pillow insert that is 20" wide x 12" high (width: 50cm x height: 30 cm).

Gauge

4" x 4" = 10 single crochet stitches and 10 rows.

Abbreviations

- st = stitch
- sc = single crochet
- ch = chain
- MC = Main Color: The background and back of the pillow
- CC = Contrast Color: The "HOME"
- RS = Right Side: The front/outside of the pillow cover
- WS = Wrong Side: The inside of the pillow cover

A Note from Jo...

Thank you so much for downloading this pattern. I'm Jo (with Jo to the World Creations) and I'm dedicated to helping you give the gift of crochet! I hope you enjoy creating this pattern. I'd love to hear from you and see what you made! Please contact me anytime with questions, feedback or to share pics!

If you are new to colorwork, I recommend reading my guide or watching my video tutorial on [How to Crochet with Two Colors](#).

This pattern is written for right-handed crochet using standard US terminology. If you're more familiar with UK terms, here's my [US to UK Conversion Chart](#).

Materials

- **Yarn:** Main Color: Pipsqueak (Bulky (5) Weight, 3.50 oz. / 100 g. Yardage per skein: 101 yd / 92 m). Skeins used in pattern: 1.5. Color: Whitey White. Contrast Color: Celine lin Super Soft Warm Coral Fleece Knitting Yarn (Bulky (5) Weight, 3.50 oz. / 100 g). Skeins used in pattern: 0.5. Color: Grey.
- **Crochet Hook Size:** K/10.5 (6.5 mm) (or size needed to obtain gauge)
- **Pillow:** One 20" x 12" pillow insert
- **Other Materials:** scissors, pins, yarn needle, measuring tape

Home Pillow Cover

crochet pattern



Working with Two Colors

For this pattern, you will add/pick up and use the contrast color only when working on the "HOME" and carry the main color along the back until you are ready to use it again.

Once you get to the main color again, you will drop the contrast color (you don't carry it to the end of the row). The rows are worked from right to left and then left to right so the contrast color will be right there when you need it again on the next row.

How to Add/Switch Colors:

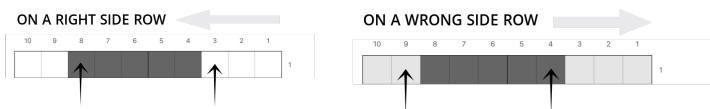
With the color you are currently working with, insert hook into the next stitch, yarn over, and pull through (you will have two loops on your hook) but instead of finishing the single crochet stitch, put the new color on hook and pull through new color, leaving the old color hanging (keep it attached to ball of yarn, don't cut). On right side rows, the yarn will hang in the back, behind the work. For wrong side rows, the yarn will hang front of you. Give the previous color a slight tug to keep stitch tight.

Now use the new color until the pattern says to switch back. To switch back, repeat the same steps.

Note: When you complete the color addition/switch, it counts as a stitch with the old color as you are setting up the next stitch with the new color.

Where to Add/Switch Colors

When following the chart: always add/switch colors in the second half of the single crochet stitch BEFORE the chart shows the new color.



When following the written instructions: always add the new color on the second half of the last sc stitch of the current color BEFORE the written patterns says to use the new color.



1. Insert hook into stitch (the stitch before the new color)



2. Yarn over and pull through (you now have two loops on hook)



3. Put new color on hook and pull through new color (leaving old color hanging - in back for RS rows and in front for WS rows)



4. Give the old color a slight tug. Now you've switched and can use the new color in the next stitch. Continue to use new color until the pattern says to switch back

Home Pillow Cover

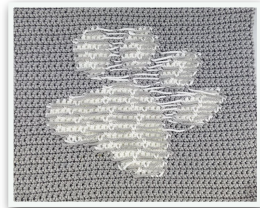
crochet pattern



Catching Floats

When working on the "HOME" with the contrast color, you will be carrying the main color along the back (the wrong side). These strands of yarn are "floating." To prevent these pieces of carried yarn from becoming too long, we "catch" them and incorporate them into the back of a stitch every 4-6 stitches.

Example of a wrong side when finished. The strands are "caught" in the back to prevent them from becoming too long.



Catching Floats on the Right Side:

Insert your hook into the stitch and take the strand of the opposite color and place it on the hook (behind the stitch). Yarn over with the color you are working with and pull through. The opposite color should not have come through but instead be caught in the stitch (hidden from the front of the work). Give the opposite color a little tug.



1. Insert hook into stitch and put opposite color on hook.



2. Yarn over with color you are working with and pull through.



The opposite color should not have come through.



The opposite color should be caught in the back.

Catching Floats on the Wrong Side:

Take the strand of yarn you are trying to catch (the opposite color) and put it over the next stitch. Simply place it there (in the middle between your active stitch and the next stitch). Insert your hook into the next stitch. Take that piece of yarn that you just placed and bring it towards you. That puts the yarn in the middle between the yarn on your hook and your new stitch. Single crochet as you normally would. Give the opposite color a little tug.



1. Place the opposite colored yarn over the next stitch



2. Insert hook into stitch and bring yarn towards you.



3. Single crochet as you normally would.



4. The opposite color should now be caught.

Notes:

- The pattern does not indicate when to catch floats. You need to remember to do this every 4-6 stitches.
- Check each "catch" to ensure the opposite colored yarn is not visible from the front

Home Pillow Cover

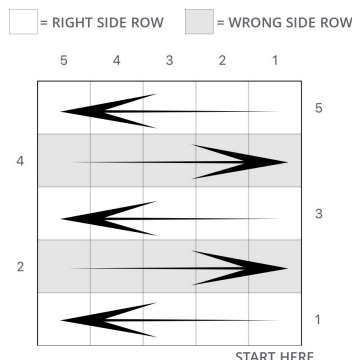
crochet pattern



Pattern Notes

- Each row has 50 stitches.
- Chain 1 does not count as a stitch.
- Catch your float every 4-6 stitches.
- Stretch your pillow wide after each row.
- Ensure all strands are always kept on the wrong side of the work.
- Add/switch colors when you have two loops of the old color on the sc stitch BEFORE the new color stitch.
- When following the written instructions, A = Main Color and B = Contrast Color and every number indicates a sc stitch (more explanation is in the written instructions)
- Read the chart from right to left when working on right side rows and left to right when working on the wrong side. The chart is lightly shaded on wrong sides to help you remember. (The written instructions lists everything in the correct order)

How to Follow the Chart:



Written Instructions

(Pattern Chart is on Page 7)

Start with and use the main color until you are instructed to add the contrast color (on row 11)

Chain: 51 (very loosely)

Row 1 (RS): In the 2nd chain from hook, sc. Sc in each stitch until the end of the row. Ch 1 and turn.

Row 2 (WS): Sc in each stitch across. Ch 1 and turn.

Rows 3 - 10: Sc in each stitch across. Ch 1 and turn.

Begin working with two colors:

Important Note: Every stitch is a single crochet (sc). The pattern does not say to sc because it gets too jumbled with all the back and forth between A (Main Color) and B (Contrast Color). Instead it says something like: A3, B4, which means: using the main color, single crochet for 3 stitches, add the contrast color on the last stitch of the main color and now using the contrast color, single crochet for 4 stitches.

Row 11 (RS): A4, B6, A2, B2, A6, B2, A8, B1, A8, B2, A3, B2, A4. Ch 1 and turn.

Row 12 (WS): Row 12: A4, B2, A3, B2, A7, B3, A7, B2, A6, B2, A2, B6, A4. Ch 1 and turn.

Row 13 (RS): A8, B2, A2, B2, A2, B2, A2, B2, A6, B5, A6, B2, A3, B2, A4. Ch 1 and turn.

Row 14 (WS): A4, B2, A3, B2, A5, B7, A5, B2, A2, B2, A2, B2, A8. Ch 1 and turn.

Row 15 (RS): A8, B2, A2, B2, A1, B4, A1, B2, A4, B9, A4, B2, A3, B2, A4. Ch 1 and turn.

Home Pillow Cover

crochet pattern



Written Instructions (Continued)

Row 16 (WS): A4, B7, A3, B11, A3, B10, A2, B6, A4. Ch 1 and turn.

Row 17 (RS): A4, B6, A2, B10, A2, B13, A2, B7, A4. Ch 1 and turn.

Row 18 (WS): A4, B2, A3, B2, A2, B13, A2, B4, A2, B4, A2, B2, A8. Ch 1 and turn.

Row 19 (RS): A8, B2, A2, B3, A4, B3, A2, B13, A2, B2, A3, B2, A4. Ch 1 and turn.

Row 20 (WS): A4, B2, A3, B2, A2, B6, A1, B6, A2, B3, A4, B3, A2, B2, A8. Ch 1 and turn.

Row 21 (RS): A4, B6, A2, B2, A6, B2, A3, B4, A3, B4, A3, B2, A3, B2, A4. Ch 1 and turn.

Row 22 (WS): A4, B2, A3, B2, A4, B2, A5, B2, A4, B2, A6, B2, A2, B6, A4. Ch 1 and turn.

Cut the contrast color leaving a 6" tail.

Rows 23 – 32: with MC sc across entire row. Ch 1 and turn.

Fasten off and weave in all loose ends. Weave in the tail of the Contrast Color into only Contrast Color parts and weave in the tail of the Main Color into only Main Color parts.



Back of Pillow

Back of Pillow Notes:

- All rows have 50 stitches across
- Chain 1 does not count as a stitch
- When assembling the pillow, the completed front is called Piece A. The bottom of the back is called Piece B and the top of the back is called Piece C.

Piece B: Bottom of Back:

With main color, chain 51.

Row 1: Sc in the second chain from hook. Sc in each stitch across. (50 sts) Ch 1 and turn.

Row 2: Sc in each stitch across. (50 sts) Ch 1 and turn.

Repeat for a total of 22 rows (piece should measure approximately 7 inches tall). On the final row, do not ch 1 and turn. Fasten off and weave in ends.

Home Pillow Cover

crochet pattern



Back of Pillow (Continued)

Piece C: Top of Back:

With main color, chain 51.

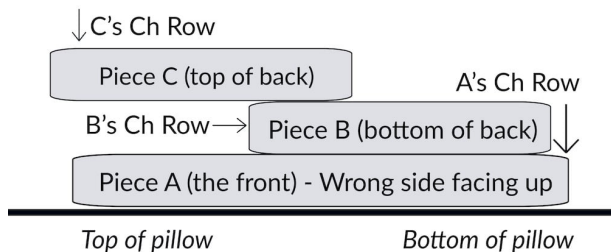
Row 1: Sc in the second chain from hook. Sc in each stitch across. (50 sts) Ch 1 and turn.

Row 2: Sc in each stitch across. (50 sts) Ch 1 and turn.

Repeat for a total of 22 rows (piece should measure approximately 7 inches tall). On the final row, do not ch 1 and turn. Fasten off and weave in ends.

Pillow Cover Assembly

Place A (the front) face down, with the wrong side facing up (the top of the "HOME" at the top).



Place B (the bottom of the back) on top of A with the last row you completed on the bottom, in line with the bottom of A. The chain row of B will be just above the centre of A.

Place C (the top of the back) on top of B and A. The middle of B will be in between A and C.

Pin the three pieces in place.

With the main color, attach yarn to bottom left corner. With the "HOME" facing you, sc into each stitch along the bottom. Sc into the corner stitch three times. Repeat around pillow cover: sc along each side and 3 sc in each corner, single crocheting the pieces together. At the final corner, single crochet twice into the final corner stitch. Fasten off and weave in ends.



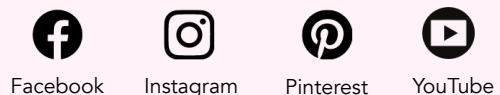
Thank You!

Congratulations on completing the pattern! I'd love to see what you made! Share by [email](#) or tag [@jototheworldcreations](#) in your posts.

Wondering what to make next? Visit jototheworld.com for more crochet gift ideas and fun projects.

If you haven't already, please sign up for my emails at jototheworld.com/subscribe and get crochet gift ideas delivered to your inbox! Plus you'll get a free Ultimate Crochet Cheat Sheet.

Stay in touch! Let's connect on:

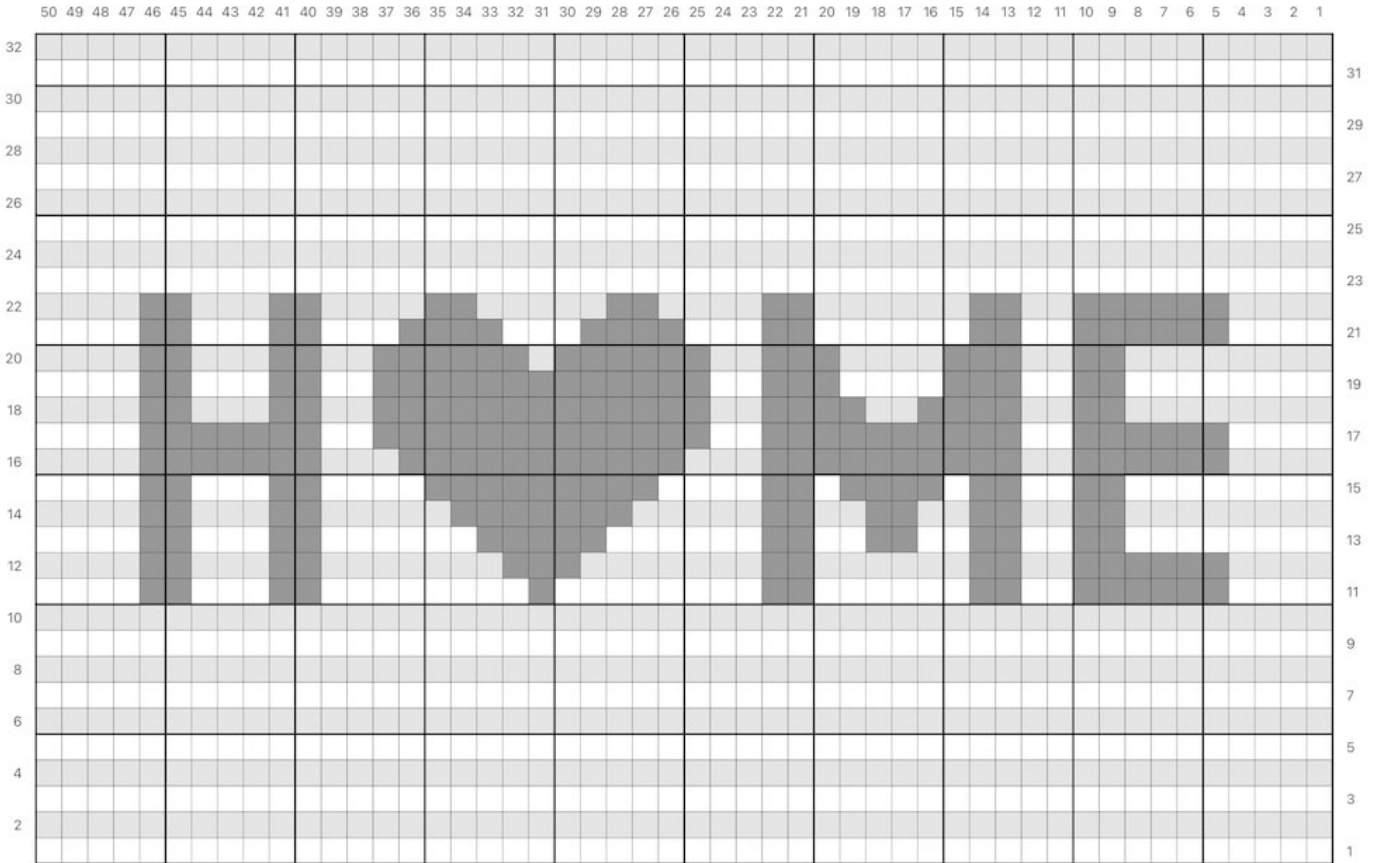


Home Pillow Cover

crochet pattern



Pattern Chart



□ = sc with Main Color (right side row)

■ = sc with Main Color (wrong side row)

■ = sc with Contrast Color